



**UNITED WE FIGHT.
UNITED WE WIN.**

LIVE UNITED™

Poverty Simulation

Updated 8-4-17

United Way of Greater Greensboro
UnitedWayGSO.org



When we can afford it, the best decisions seem obvious. For families in low-income communities, **difficult choices are a daily struggle**. Small issues, without proper attention, have lasting effects.

**Without sufficient resources,
what decisions would you make?**

It's Monday and you need to get groceries to feed your family for the week. The nearest grocery store is 2 miles away. There's a convenience store at the end of the block.

You have limited time. You can take the bus to the grocery store, adding a whole hour to the trip, or walk to the convenience store at the end of the block.

You only have \$25 cash. What do you do?

- Hop on the bus for \$3 roundtrip and head to the grocery store. It will take you longer but there are more options. Make the \$22 stretch.
- Walk to the convenience store. There's less there, but you'll have the full \$25 and it won't take all afternoon.

Good news! Your boss is recognizing your hard work with a promotion! Great, right? Not so fast.

The increased hourly wage means you will no longer qualify for childcare assistance and you'll actually end up with less money to go around each month.

What do you do?

- Look to the future and accept the promotion, cut back in other ways at home.
- Respectfully decline the promotion and remain in your current job.

Your child comes home with a permission slip for a class field trip to the Science Center. The cost is \$15 and includes lunch.

Paying for the trip would mean you can't pay for your utilities until you get your next paycheck.

What do you do?

- Pay the \$15. This is a great educational opportunity for your child.
- Decline the field trip and pay your utilities on-time. Your child's education is important but so is keeping the lights on.

What's the problem?

1 in 5 residents and **1 in 4** children in Greensboro live in poverty. That's **57,000** people struggling to meet basic needs.

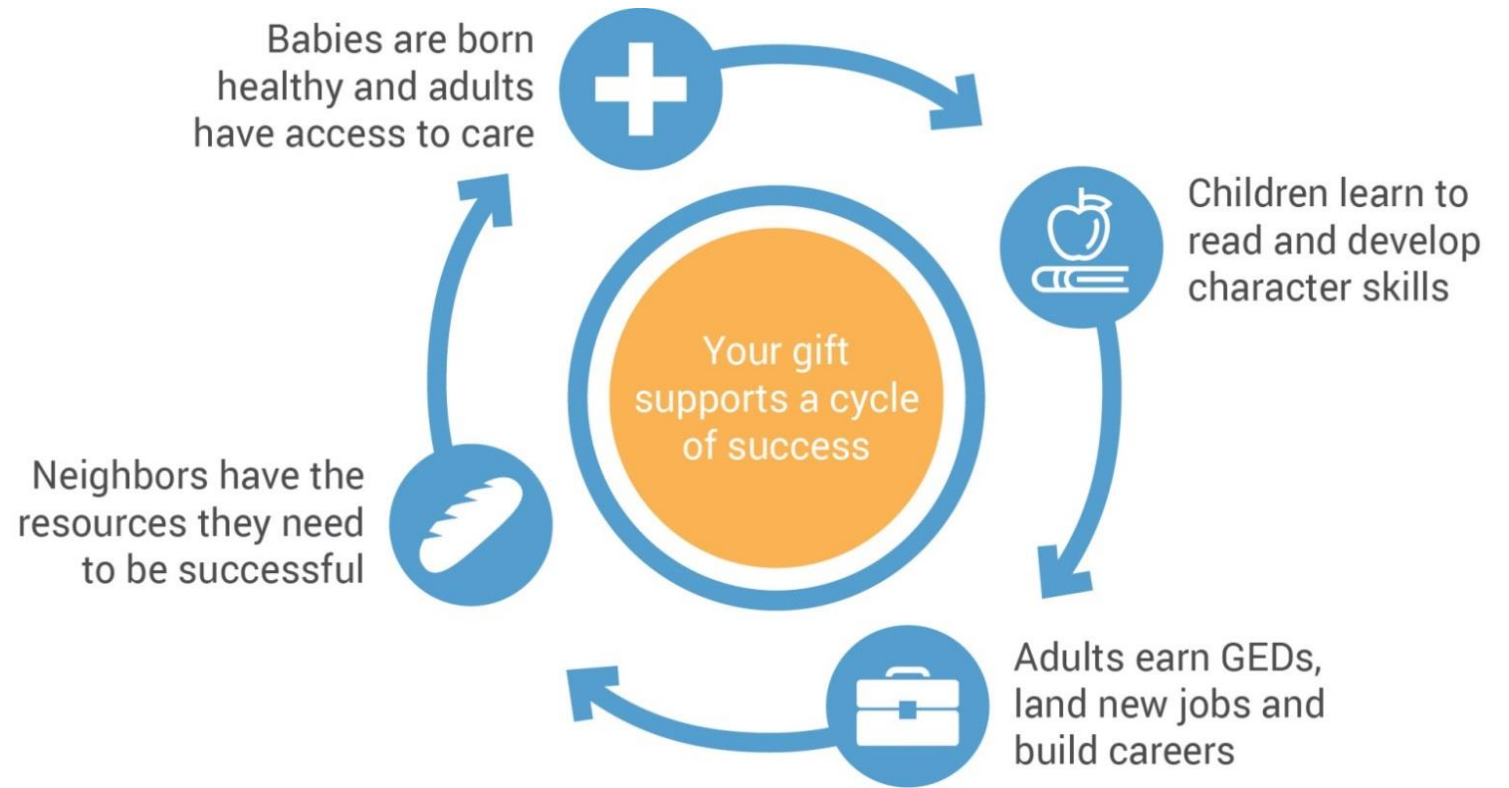
Poverty Guideline: **\$24,600** annual income for a family of 4

Poverty impacts us all. High rates of poverty mean an increase in the need for public assistance (higher taxes), slower business and economic development, increased crime rates, lower housing values, lower performing schools, etc.

What's the solution?

Replacing poverty with self-sufficiency requires more than a handout.

It requires our community working together to help people achieve long-term success.





**UNITED WE FIGHT.
UNITED WE WIN.**

LIVE UNITED

**United Way creates
partnerships to
reduce poverty in
greater Greensboro.**

